

# BANTAM<sup>®</sup>

H I G H P E R F O R M A N C E M A N U A L L Y - O P E R A T E D D O O R

## The Economical, Break-Away<sup>™</sup> Dock Door Alternative.

The Bantam roll door is an economical fabric door alternative to high maintenance overhead dock doors. With the same crisp lines and fabric selection as our popular PredaDoor<sup>®</sup>, it accommodates most dock applications. The Bantam door is ideal for interior or exterior applications with low to moderate traffic.

With manual operation standard via a pull-chain hoist, the Bantam can also be motorized for push button opening and closing if desired.

**Takes a Hit** - Quick-Set<sup>™</sup>, Break-Away<sup>™</sup> tabs allow bottom bar to be reset in just seconds, without tools, virtually eliminating down time.

**Simple Operation** - Chain hoist and speed governor make for easy manual door operation.

**Minimal Space** - Only 6-1/4 inches of side clearance and 3-3/4 inches of side column projection required.

**Wind Resistance** - Integral panel connecting ribs allows quick, inexpensive replacement of all panel sections and provides resistance to wind and negative pressure.

**Visibility** - 17 inch by 17 inch replaceable PVC window is standard. Optional full-width vision panel is available.



**RYTEC**  
CORPORATION  
Driving The Door Industry.<sup>SM</sup>

# BANTAM<sup>®</sup>

HIGH PERFORMANCE MANUALLY-OPERATED DOOR

**Specifications:** Subject to change

**Model:** Rytec<sup>®</sup> Bantam<sup>®</sup> Door

**Standard Size:** Up to 10 feet wide by 10 feet high.

**Door Panel:** Standard options include 32-ounce replaceable vinyl sections, extruded aluminum connecting rib(s), and one 17 inch by 17 inch replaceable PVC window. Options include 2-ply Rilon<sup>™</sup>, USDA compliant material, screen material and full-width vision panels.

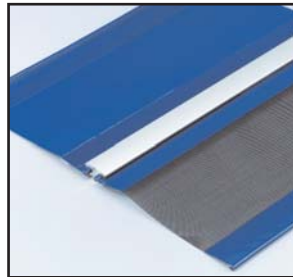
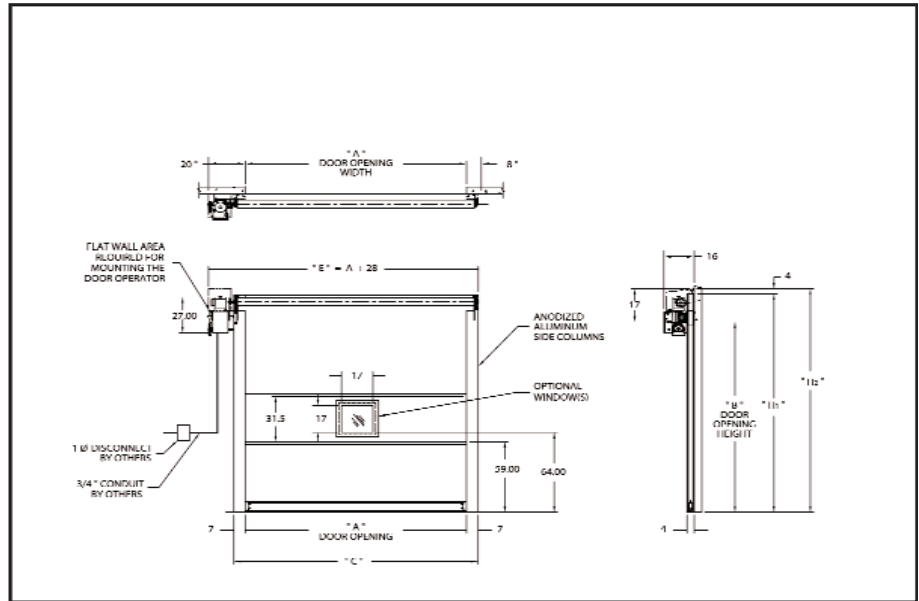
**Side Frames:** Fully bolt-together, anodized aluminum construction with full-height weatherseal to seal against panel material.

**Manual Drive System:** Opening and closing is manually operated by use of chain hoist and speed governor.

**Optional Powered Drive System:** Overhead door operator available with a single open/close/stop push button station. Motor horsepower and voltage selected to meet specific application. Includes a pneumatic reversing edge.

**Bottom Bar:** Quick-Set, Break-Away extruded aluminum bottom bar releases in either direction without damage to the door. Vinyl seal on bottom edge for tight seal to floor. Sliding locks on bottom bar standard. Bottom bar preassembled on doors at factory.

**Warranty:** One year limited warranty on materials and workmanship.



**Door Panel Assembly**  
Integral connecting ribs allow easy replacement of individual panels, including optional screens, while providing stiff resistance against wind and negative pressure.



**Replaceable PVC Window**  
Velcro-sealed PVC windows can be replaced quickly and easily.



**Easy to Reset**  
Quick-Set, Break-Away tabs allow bottom bar to be reset in just seconds, without tools, after taking a hit.



One Cedar Parkway  
Jackson, WI 53037-0403  
Phone: 262-677-9046  
Fax: 262-677-2058  
Toll Free: 888-GO-RYTEC  
Email: info@rytecdoors.com  
Web: www.rytecdoors.com