

FAST-FOLD®

HIGH PERFORMANCE FOLDING DOOR

America's First Break-Away™ Door and Still a Workhorse.

With its natural ability to withstand forklift impact without sustaining damage, the Fast-Fold door introduced the Break-Away concept to the United States in 1995.

It can be used almost anywhere, for interior, exterior, warehousing, manufacturing or commercial applications. Because of the many patented, proven design features like its rugged Tec-Trak™ and floating Ryflex™ roller system, it provides millions and millions of cycles of dependable service.

Fast - Opens at up to 84 inches per second for improved traffic flow.

Safe - With its full height, clear PVC panels, the Fast-Fold provides great visibility and added safety for interior applications where fork trucks and other equipment are crossing the threshold in both directions, crossing the door's traffic lane, or both.

Energy Efficient - Overlapping Puralon™ panels with rope tie panel connectors offer a great seal to dramatically reduce energy loss.

Durable, Low Maintenance - Engineered to last millions of cycles with minimal maintenance.

Takes a Hit - Withstands a fork truck impact with little or no damage, virtually eliminating down time.

Easy Installation - Modular construction and easy to hang panel mounting hardware allows for quick and easy installation.



RYTEC
CORPORATION
Driving The Door Industry.™

FAST-FOLD[®]

HIGH PERFORMANCE FOLDING DOOR

Specifications: Subject to change

Model: Rytec[®] Fast-Fold[®] Door

Standard Size: Up to 35 feet wide by 25 feet high

Door Panel: Six door panels are constructed of 3/8 inch thick Puralon. Option 1/2 inch thick Puralon panels available. Panels are mounted on six center suspended rotor arms.

Side Frames: Side frames and covers made of 16 gauge cold-rolled sheet metal welded to structural angle. Exposed metal surfaces chemically cleaned then painted with a two component acrylic urethane top coat. Door is fully modular with no welding required for installation.

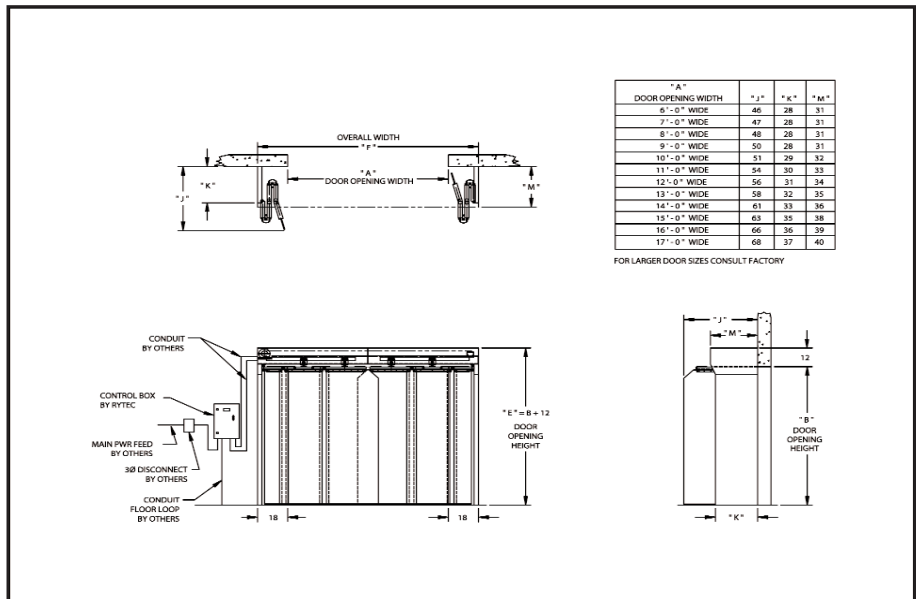
Door Seal: Door panels overlap up to 12 inches and are held together by rope tie panel connectors. Optional Velcro[®] seam connectors available.

Roller System: Door equipped with Tec-Trak I roller system with a minimum of 16 model GS 1-7/8 inch Ryflex floating rollers. Roller assembly deflects up to 7 degrees in the vertical plane in order to maintain full roller surface bearing contact with track. Rollers are carburized, hardened and fully sealed with ball bearings. Optional BFGS roller available. Option Tec-Trak II roller system available.

Roller Track: Roller track is constructed of cold-formed alloy steel, integrally mounted to the face of up to two 6 inch structural channels.

Drive System: Three-phase, variable speed AC Drive provides soft acceleration and deceleration. Independent opening and closing speeds provide flexibility to accommodate any application. Motor and electrical components are factory wired to junction boxes in the head assembly.

Travel Speed: Opens at up to 84 inches per second.



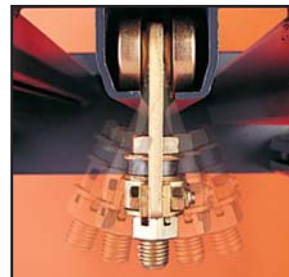
"A" DOOR OPENING WIDTH	"J"	"K"	"M"
6'-0" WIDE	46	28	31
7'-0" WIDE	47	28	31
8'-0" WIDE	48	28	31
9'-0" WIDE	50	28	31
10'-0" WIDE	51	29	32
11'-0" WIDE	54	30	33
12'-0" WIDE	56	31	34
13'-0" WIDE	58	32	35
14'-0" WIDE	61	33	36
15'-0" WIDE	63	35	38
16'-0" WIDE	66	36	39
17'-0" WIDE	68	37	40

FOR LARGER DOOR SIZES CONSULT FACTORY



Rollers

Model GS (1-7/8 inch) rollers standard. Options available.



Rollers

Ryflex floating rollers pivot up to 7 to continually maintain contact with the track, reducing wear and tear.



System 3 Controller

Makes programming and troubleshooting easier, more flexible and more precise than ever.

Electrical Controls: System 3[®] controller is housed in a NEMA 4 rated enclosure with factory set parameters. Self-diagnostic features and a two-line, 32-character LCD display in English, Spanish or French provide quick and straightforward installation and control adjustments. Programmable inputs and outputs accommodate special control requirements without the need for additional electrical components.

Warranty: One year limited warranty on materials and workmanship. Ten year warranty on door track and roller system with BFGS hardware.



One Cedar Parkway
Jackson, WI 53037-0403
Phone: 262-677-9046
Fax: 262-677-2058
Toll Free: 888-GO-RYTEC
Email: info@rytecdoors.com
Web: www.rytecdoors.com