

Saino Swing Doors & Door Operators



DuruSwing 9700K



Durulite CR 1400

DuruSwing™ Corrosion-Resistant Swinging Personnel Door

DuruSwing Doors, 9700K & CR 1400, are the ideal choice for areas with limited doorway side clearance. Available as single or double panel types, DuruSwing door panels are built with the same rugged construction as the Duruslide Doors.

DuruSwing Model 9700K

Model 9700K is an economical choice when compared to stainless steel or fiberglass. The durable panels are fabricated using 1-1/2", 16 gauge welded steel tube framework and Kraft honeycomb core. The Kydex finish has a standard haircell finish that hides scratches, fingerprints and abrasions caused by incidental contact. The standard flush stainless steel perimeter capping and sloped stainless steel window frames allows for easy cleaning and resists particle buildup.

Durulite Model CR 1400

Model CR 1400 outer door surface is rotationally molded from cross-linked polyethylene making it ideal for washdown applications since there are no seams for water or chemicals to penetrate the skin and erode the core. An internal steel frame provides strength and ensures flatness of the door panel and Non-CFC urethane foamed-in-place core provides excellent thermal properties and impact resistance. Weighing only 3.11 pounds per square foot this door is lightweight and easy to open.

Door Operators

F1900-PLC & 1900-PLC High Speed Operators

Traditional Fire Doors are designed to close and remain closed when activated. The F1900-PLC fire door system automates the door for everyday use and insures that the fire activated closing system remains operational at all times. In addition to the activators provided with the operator, the system can be connected to a central alarm system, providing an added level of safety. The Model F1900-PLC is equipped with a Battery Backup System, which keeps the closing system functional in the event of a power failure. The door can be opened with the battery for egress, provided the temperature has not exceeded 194°F. on either side of the opening. When the emergency situation is resolved and power is returned to the door, the door system functions as normal. F1900-PLC and 1900-PLC High Speed Operators are an excellent alternative to weight and reel closing systems.

TXP Sliding Door Operator

With its modular design and quiet operation our Sliding Door Operator is the perfect choice for clean rooms, food processing and pharmaceutical applications. Movement of the door is controlled by a microprocessor controller, which requires no relays, wires or limit switches. Upon start up, the door will calibrate itself to the full open and close position and automatically set its travel. A separate activator is available for a partial open. Troubleshooting is easy with a self-diagnostic control panel. The system automatically performs tests to identify where a potential problem exists and displays a "fault code." Most problems can be resolved in minutes.

TN Swing Door Operator

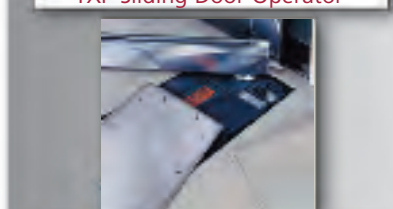
The TN in-floor electrohydraulic door operator is unique in the industry in that it is completely concealed and self contained in the floor with no separate pump or oil lines to leak. Perfect for use on beautiful tempered glass doors, monumental doors, large doors, or heavy doors. Meets ADA requirements for entrance doors. Opens hydraulically and closes by spring force, yet it can be easily opened by hand at anytime. Existing manual doors with floor closers can be automated with the TN operator. A panic breakaway arm is available for in-swinging doors. Ruggedly constructed for low maintenance and long lasting durability



F1900 Operator



TXP Sliding Door Operator



TN Operator

Kydex® is a registered trademark of Klerdex

Catalog #SAI0106
Printed in the U.S.A.

Chase Doors
World's Leading Manufacturer of Traffic Doors

Chase Industries, Inc.
Cincinnati • Redmond
Toll-Free (800) 543-4455 • (513) 860-5565 • Fax (800) 245-7045
Web site: www.chasedoors.com • E-mail: info@chasedoors.com

**For downloadable drawings
and specifications
please visit
www.chasedoors.com**

In our continuing effort to improve our products, some specifications or descriptions may change. We reserve the right to make such changes without notice or recourse.

Chase Saino Fire and Service Doors



Saino Fire & Service Doors, Saino Fire & Service Doors, Saino Fire & Service Doors

About Saino Doors

Saino Fire and Service Door Systems, manufactured by Chase, are used in commercial and industrial applications where a fire barrier is required. Large and small openings can easily be managed with Saino Fire Doors. All Saino Door Systems are custom manufactured by Chase to your specific application requirements and provide the following benefits:

Listed and Labeled Construction

Saino Fire Doors can be rated for openings that require up to a 4-hour label. Saino Fire Doors are UL approved and FM available. A 250°, 30 minute temperature rise label is also available, providing an added level of safety in areas where personnel are present.

Multi-Purpose Door

All Saino Door Systems can be automated, allowing the door to be used as a functional door system as well as a fire door. This two-in-one feature reduces the cost of providing two separate door systems in a single opening and insures that the door will be operational in the event of a fire. All Saino fire door operators are listed and labeled for use as an automatic closure device. Automated fire doors can be connected to a central fire system, increasing personnel safety and minimizing potential damage caused from fires.

Standby Battery Closing System

Saino automated fire door systems come complete with a standby power supply that is approved under UL 228 and UL 924 as tested for critical components. This closing system allows a horizontal sliding door system to be used as an approved means of egress in most applications. Saino sliding fire door systems can also be equipped with pass doors including multiple doors for double egress.

Limited Headroom - Not a Problem!

Sliding fire doors require less headroom than conventional rolling overhead fire doors. Sliding doors are the best alternative when limited headroom or overhead obstructions prevent the use of overhead doors.



Model 2000



Model 4000



DuruSlide



Model 61000



Model 1100



Model 50000



Model 63000

Saino Casing Mounted Service Doors

Saino Casing Mounted Service Doors

Model 61000 & 63000

These attractive doors are designed for high use applications and are available in single slide or center parting configurations. Model 61000 provides a clean appearance and insures a positive seal when the door is closed by utilizing perimeter casings and panel mounting gasketing. Model 63000 is targeted for applications where the reduction to particle buildup is essential, ease of cleaning is critical and aesthetic appeal is desired. Both models utilize the TEP track system for easy installation and years of trouble free service.

Model 61000

Panel is constructed with 18 gauge cold rolled face sheets bonded to Kraft honeycomb core and 18 gauge interior channels. Optional finishes include stainless steel, galvanized or prime painted finishes. Optional cores include fiberglass and urethane.

Model 63000

Model 63000 panels are constructed with 16 gauge stainless steel face sheets bonded to Kraft honeycomb core and 16 gauge internal tubing. No visible face screws are on the production side of the door, so the entire window assembly is flush with the door. Stainless steel flush handles are standard on both sides of the door. A weather-strip creates a tight seal for insulation and noise control.



Model 61000



Model 63000



DuruSlide

DuruSlide™ Pre-mounted Specialty Door Systems

DuruSlide™ Model 67000D, 67000K and 67000F

These door systems are designed for use in pharmaceutical facilities, factories, processing plants, and other areas where a clean environment must be maintained and harsh chemicals exists. All three models utilize the TEP track system. The TEP track system allows for easy installation, provides exceptional seals and is designed for years of trouble free service and quiet operation.

DuruSlide™ Model 67000D

These lightweight panels operate easily and require minimal wall reinforcement for retrofit applications. Door panels are constructed of 1-3/4" thick rotationally molded cross-linked polyethylene with a high density Non-CFC foamed in place core. Panels are internally reinforced with 14 gauge tubular steel. Flush stainless steel edge caps and vision panels allow for easy cleaning and resist particle build up. Monolithic "one-piece" panel construction makes this door ideal for washdown applications.

DuruSlide™ Model 67000K

The 67000K door panel is fabricated using a 16 gauge internal welded steel tube framework, allowing the panels to be manufactured to virtually any size. The standard core is Kraft honeycomb with optional urethane insulation available. The panel finish is impact resistant Kydex®, and is available in a variety of colors. Consider the 67000K for large size openings and areas that have high positive or negative air pressure. Like the 67000D, this model can be used in applications where a variety of chemicals and cleaning solvents are used.

DuruSlide™ Model 67000F

The 67000F is constructed of an internal FRP frame with a honeycomb core and 1/8" thick, gel-coated FRP panel that provides a smooth, cleanable finish. The panel color is molded in and requires no painting or maintenance. All edges are protected by 18 gauge, #304 stainless steel capping channels, creating an attractive and durable design. The 67000F is suitable for applications with regular cleaning using harsh chemicals and cleaning solutions.

Saino Sliding Service Doors

Selection Guide



Model 3100



Model 1100

Saino Sliding Service Doors

Chase manufactures non-labeled Saino Sliding Service Door Systems to the same high standards that are maintained for fire door systems. Models 3100 and 1100 offer options that will satisfy almost any non-labeled sliding door requirement. Applications include warehouse doors, doors with high wind load, or wall openings that provide access to oversize manufacturing equipment.

Both models incorporate modular panel construction with a Kraft honeycomb core securely bonded to 18 gauge cold rolled face sheets and utilize 18 gauge interior channels. The panels are assembled with 14 gauge capping channel and 10 gauge bottom guide roller channel. Multiple panels have surface applied splice plates. Doors ship prime painted.

Model 3100

The Model 3100 Service Door is an excellent choice where high usage or easy operation is a must. Doors are equipped with 2" x 2" x 3/8" angle track with 5-1/4" diameter wheels for manual or automated operation. The track system can be motorized without additional track hardware. The Model 3100 uses the patented Easy Roll hardware system, which offers the lowest friction of any service door.

Model 1100

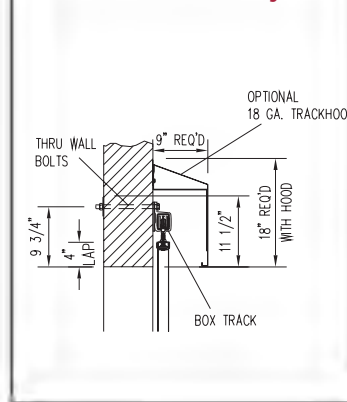
The Model 1100 is an economical manual sliding door available in single slide or center parting configurations. These doors are equipped with standard 12 gauge box track for manual operation. Heavy-duty hardware is available for large openings or motorize doors.

Saino Sliding Service Door Options

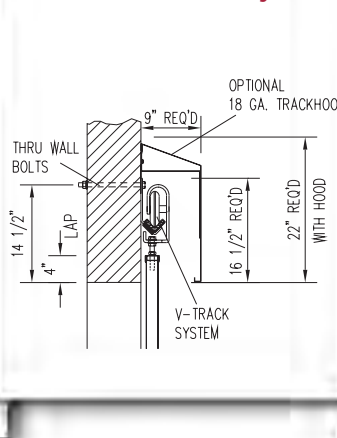
- 1900 Operator
- Galvanized, Stainless Steel, or Prime Painted Finish
- Pass Doors
- Vision Panels
- Track Hoods
- Monorail Cutout
- Gaskets
- Locking Devices

For downloadable drawings and specifications, visit our Web Site at www.chasedoors.com

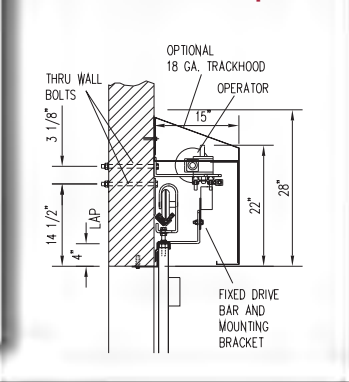
Model 1100 Track System



Model 3100 Track System



Model 3100 Track System shown with 1900 operator



Selection Guide For Saino Doors & Operators

OPERATION	SERIES	TYPICAL APPLICATIONS	BENEFITS
Single Slide	Industrial Fire Door 1000, 2000 * 1000T, 2000T	Warehouses, Industrial, Institutional & Commercial Applications *T* models have tube frames for large applications.	Economical, rugged and easy to install and maintain. Tube doors available for large openings. Wind-load applications.
	Industrial Fire Door 3000, 4000 *	Warehouses and Industrial applications where the door is operated, or will be used as a service door in addition to a fire door.	Easy to open and close. Smooth operation. Perfect for automated doors.
	Pre-Mounted Fire Door 50000	Pharmaceutical Processing Plants, Climate-controlled manufacturing areas. An excellent choice for high traffic openings.	Pre-mounted system provides a "cleaner look" than most fire doors. Gasketing system provides an excellent seal.
Single Slide	Service Doors 1100	Warehouses and Industrial applications where a non-labeled sliding door is required.	An economical choice for large factory doors.
	Service Doors 3100	Warehouses, Industrial, Institutional and Commercial applications with high usage.	Easy to operate. Recommended for motor-operated applications.
Center Parting	Pre-Mounted Door System 61000	Pharmaceutical Processing Rooms, Electronics Manufacturing Facilities, Hospitals and Commercial Buildings.	Casing Mounted Door provides an excellent seal. Durable track system designed for high usage in non-labeled applications.
	OverSlide 67000	Pharmaceutical Processing Rooms, Hospitals and Institutional applications where washdown exists.	Designed for routine washdown with harsh chemicals. Provides an excellent seal. Constructed of corrosion-resistant materials.
	Stainless Steel Service Door 63000	Processing facilities where the reduction to particle buildup is essential.	Designed with flush construction for ease of cleaning and aesthetic appeal.
	OverSlide Doors 9700K & CR 1400	Processing facilities, Food Service, Hospitals and Institutions.	Ideal choice for areas with limited doorway side clearance and require routine washdown with harsh chemicals.

* Series 2000 and 4000 doors have a calcium silicate core and are designed for applications that require a temperature rise rating.

OPERATOR TYPE	MODEL	TYPICAL APPLICATIONS	BENEFITS
Fire Door Operator (Sliding Doors)	F1900-PLC	Sliding Fire Doors in high usage applications	Eliminated weights and reel closers. Automates door for everyday use.
Non-Labeled Slide Door Operator	1900-PLC	Sliding Service Door applications.	Automates sliding service doors in high-traffic applications.
Non-Labeled Slide Door Operator	TXP	Pharmaceutical Sliding Doors Washdown, controlled and in-wall applications.	Microprocessor controlled system provides smooth, "silent" operation. Adjustable speed control.
In Floor Swing Door Operator	TN	Personnel Doors where aesthetic appeal is a consideration.	Operator is concealed in the floor. Doors can be automated while maintaining an attractive appearance.
Heavy Sliding Door Operator	1924-PLC	Extremely large or heavy sliding door systems. Lead lined doors.	Operates sliding doors weighing up to 24,000 lbs.

Fire Doors ■
Service Doors ■

Saino Sliding Fire Doors

Saino Casing Mounted Fire Doors



Model 4000 shown with optional pass door, panic hardware and vision panel



Model 2000 shown with optional pass door and panic hardware

Saino Sliding Fire Doors

All models incorporate modular panel construction with a Kraft honeycomb core or calcium silicate securely bonded to 18 gauge cold rolled face sheets and 18 gauge interior channels. The panels are assembled with 14 gauge capping channel and a 10 gauge bottom guide roller channel. Multiple panels have surface applied splice plates. Doors ship prime painted.

Model 3000 & 4000

Designed for applications where high usage and up to a 4-hour label are required. Both models have rugged panel construction. The Model 4000 system utilizes the same design with a calcium silicate core in place of honeycomb core to offer a 250°F., 30 minute temperature rise label. Both models are equipped with a weight or reel type closing system, 2" x 2" x 3/8" angle track system, 5-1/4" diameter wheels and thru wall linkage. All hardware is UL Labeled and prime painted. The patented Easy Roll track system gives Model 3000 & 4000 the lowest friction of any fire door on the market. The track system can be motorized without additional track hardware.

Model 1000 & 2000

Designed for use in applications requiring economy in a manual door with ratings up to a 4-hour label. The Model 1000 system incorporates modular panel construction with a honeycomb core. The Model 2000 series is constructed with a calcium silicate core for 250°F., 30 minute temperature rise rating. Large openings and wind load applications use tubular steel panel construction. Both models are equipped with a weight type closing system with weight box, 12 gauge box track hardware and thru wall linkage. All hardware is UL Labeled and prime painted.

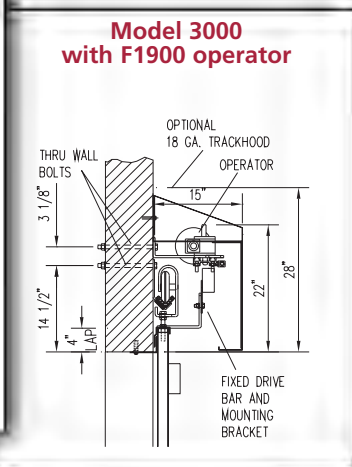
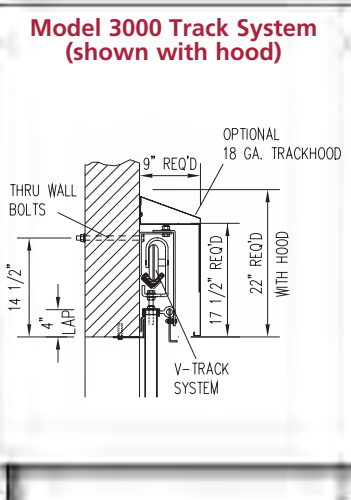
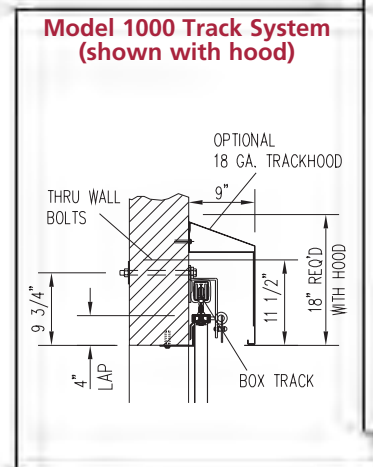
Saino Sliding Fire Door Standard Features

- Automatic Close System with Thermal Heat Detectors
- Low Maintenance, Heavy Duty Hardware
- Single or Center Parting Configurations
- Wall Mounted Binders
- Up to 4 hour UL & FM Label

Saino Sliding Fire Door Options

- F1900 Operator with Battery Backup & Heat Detectors
- Pass Doors
- Vision Panels
- Track Hoods
- Perimeter Gasketing
- Reel Closing System
- Control Speed Closing
- Locking Devices
- Spark Proof Hardware
- Monorail Cutouts
- Galvanized, Stainless Steel or Prime Painted Finish

For downloadable drawings and specifications, visit our Web Site at www.chasedoors.com



Saino Casing Mounted Fire Door

Model 50000

Casing mounted fire doors are an excellent choice for applications with high usage and where appearance is important. Standard features include 20 minute to 4 hour rating, low headroom track system, concealed binders and full perimeter gasketing. Doors are available single slide or center parting and come in manual or motor operated configuration. Casing mounted design provides adequate spacing on both sides of panel to install surface mounted or mortised hardware for handicap access while allowing a portion of the weight of the door to be transferred to the floor.

Superior Construction

Model 50000 fire door system is manufactured with 12 gauge welded channels with 18 gauge surface welded face sheets. The core material is fiberglass. Multiple panels are connected with an "H" channel with a cover plate. A heavy gauge capping system finishes the panel perimeter without the use of visible face screws. Doors ship prime painted and bear up to a 4 hour UL Label. System is equipped as standard with a weight type closing system and STEL hardware, and is mounted to a 7 gauge header casing. The 50000 fire door is fully gasketed.

STEL Track System

This track system is the best alternative for low headroom applications. The STEL Track System is designed to provide years of trouble free service in high frequency use applications.

Saino Casing Mounted Fire Door Benefits

- Superior aesthetic appeal
- A heavy gauge perimeter channel encloses the panel and eliminates surface mounted fasteners
- 1-3/4" hollow metal door construction insures structural integrity for large openings
- Pre-mounted casing system provides an excellent seal
- Pass Door panic devices can be mortised for use on the wall side of fire door, allowing for double egress

Saino Casing Mounted Fire Door Options

- F1900 Operator with Battery Backup & Heat Detectors
- Pass Doors
- Locking Devices
- Vision Panels
- 450° Temperature Rise Label
- Monorail Cutout
- Perimeter Gasketing
- Track Hood
- Galvanized, Stainless Steel or Prime Painted Finish

For downloadable drawings and specifications, visit our Web Site at www.chasedoors.com



Model 50000 shown with optional pass doors, vision panels and panic hardware



STEL Track

