

TNR™ SERIES

HIGH PERFORMANCE ROLLING RUBBER DOOR

The Extreme Roll Door For Rugged, Harsh Environments.

The TNR™ Series rubber rolling doors are designed for the most severe environments including mining, steel, paper mills and other heavy manufacturing applications. The doors incorporate the innovative NEWGEN™ Guide and Curtain Lok System which virtually eliminates wear and withstands severe winds and impacts from either direction.

The doors are manufactured by TNR Industrial Doors, Inc., whose management team has more experience specifically with rubber rolling doors than any other door company. The TNR Series rubber rolling doors deliver unmatched durability and reliability with minimal maintenance for severe applications.

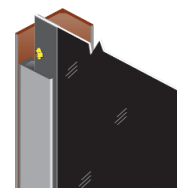
Takes A Hit - Thick SBR rubber curtain with reinforced core weave withstands head-on impacts. Double angle Knock-Away™ bottom bar allows for easy reset upon impact.

Wind Resistance - The NEWGEN™ Guide and Curtain Lok system combined with the thick SBR rubber curtain withstands windloads of 88 mph (20 psf) and provides a tight seal.

Easy to Install - The self-supporting steel frame and installation-friendly design make for an easy, accurate and cost saving installation.

Easy to Maintain - The NEWGEN™ Guide is constructed of one piece, high-strength aluminum. There are no hinges, cables, pulleys or curtain guide gaps to maintain and all parts are readily available due to simplified design.

Simplified Counterbalance - The torsion counterbalance springs have a life of 100,000 cycles. Optional counterbalance systems available.



TNR™ SERIES

HIGH PERFORMANCE ROLLING RUBBER DOOR

Specifications: Subject to change

Model:	Maximum Size:	Speeds Up To:	Drive:
HDM: Heavy Duty Manual	20'x20'	N/A	Manual Chain
HD: Heavy Duty	25'x20'	18" per second	Single Speed, RG Operator
HDT: Heavy Duty Traffic	25'x20'	30" per second	Single Speed, HG Operator
HDS: Heavy Duty Speed	20'x20'	60" per second	Variable Speed, HG Operator
HDL: Heavy Duty Large	20'x25'	24" per second	Single Speed, HG Operator
HDXL: Heavy Duty Extra Large *	35'x30'	12" per second	Single Speed, HG Operator

*Larger HDXL sizes considered upon request

Model:	Electrical Controls:
HD	Push Button Station - Open, Close, Stop
HDT, HDL, HDXL	Wall Control Panel with PLC controller
HDS	Wall Control Panel with PLC controller and inverter providing soft acceleration and deceleration

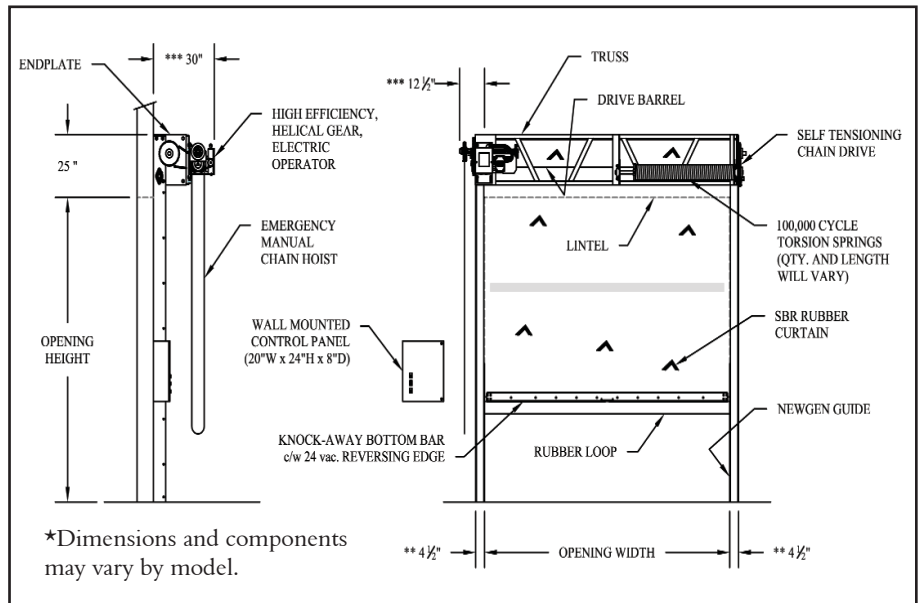
Door Panel: 1/4" SBR rubber (Styrene Butadiene Rubber) curtain for temperatures -40°F to 180°F.

Side Frames: One piece, extruded aluminum *NEWGEN™* Guide and steel mounting angle. One photo eye assembly is standard.

Counter Balance: The torsion springs provide for safe door operation by assisting the motor in opening and closing the door.

Bottom Bar: Double angle Knock-Away™ bottom bar with integrated reversing edge.

Warranty: Two-year warranty on parts and workmanship. Limited lifetime warranty on curtain and *NEWGEN™* Guide.



◀ **Long Life:** Mechanically fastened *NEWGEN™* Curtain Lok means no glued components to fall off. Wear is virtually eliminated by the innovative simplicity of *NEWGEN™* Guide and Curtain Lok System.



▲ The *NEWGEN™* Guide and Curtain Lok withstands severe winds and prevents damage from impacts from either direction.



One Cedar Parkway
 Jackson, WI 53037-0403
 Phone: 262-677-9046
 Fax: 262-677-2058
 Toll Free: 888-GO-RYTEC
 Email: info@rytecdoors.com
 Web: www.rytecdoors.com