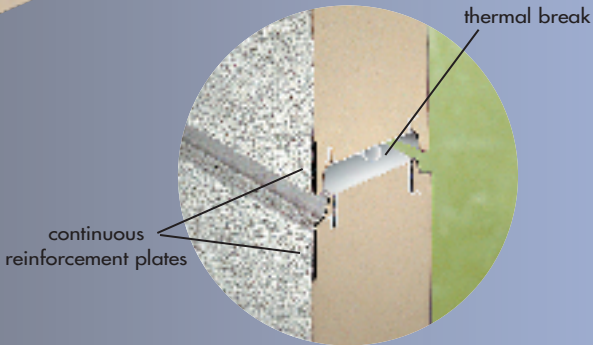
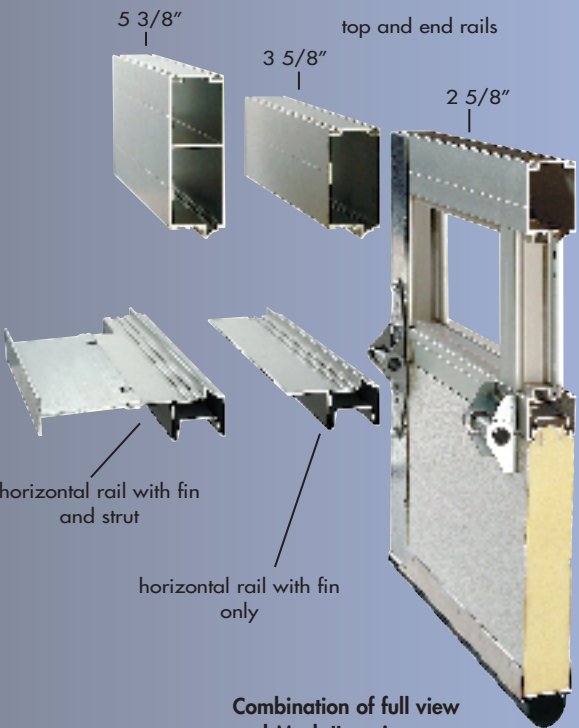


*MARK III (3" thick)
not shown



Tongue-and-groove joint with
air-tight integral weatherstrip



Combination of full view
and Mark II sections

Features

FOUR DOOR THICKNESSES WITH SUPERIOR R-VALUES

Model	Thickness	R-value
MARK I	1 5/8" (41mm)	R=14.30 (RSI=2.51)
MARK II	2" (50mm)	R=18.20 (RSI=3.20)
MARK III	3" (78mm)	R=27.90 (RSI=4.90)
MARK IV	4" (100mm)	R=37.20 (RSI=6.54)

HIGH QUALITY STEEL AND ALUMINUM SKINS IN A WIDE SELECTION OF GAUGES

Steel	Aluminum
26 GA (0.41mm)	24 GA (0.60mm)
20 GA (0.86mm)	18 GA (1.02mm)
16 GA (1.42mm)	16 GA (1.30mm)

TONGUE-AND-GROOVE JOINT WITH AIR-TIGHT INTEGRAL WEATHERSTRIP

CONTINUOUS REINFORCEMENT PLATE FOR HINGES ATTACHMENT

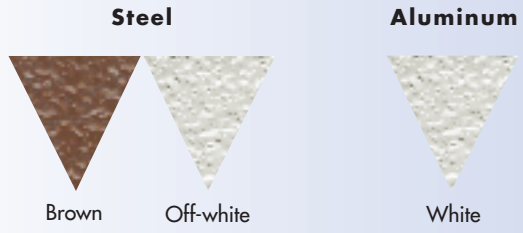
AUTHENTIC THERMAL BREAK

- MARK I : 3/8" (9mm)
- MARK II : 3/4" (18mm)
- MARK III : 1 3/4" (43mm)
- MARK IV: 2 3/4" (68mm)

WIDE SELECTION OF FINISHES

Steel	Aluminum
26 GA: prepainted off-white or brown	24 GA: prepainted white
20 GA: pre-painted off-white	18 GA & 16 GA: clear anodized (optional)
16 GA: enamel paint (optional)	enamel paint (optional)

Prepainted Colors



Polyurethane Insulated Doors MARK I, II, III, IV



THERMOSTOP

THE GARAGE DOOR

Since 1984, THERMOSTOP has been a proud manufacturer of high quality polyurethane sectional garage doors.

The Thermostop insulated door has all the features that make it a superior product: tongue-and-groove joint, integral air-tight weatherstrip, continuous reinforcement plate and many other advantages.

The Thermostop doors offer you a wide range of thicknesses (1 5/8", 2", 3" and 4") with the highest insulation values on the market (R=14.3 to R=37.2).

With THERMOSTOP, you can also have your choices of steel gauges (26GA to 16GA) and aluminum gauges (24GA to 16GA).

The Thermostop door, backed by a comprehensive warranty program, is the answer to your requirements for a superior garage door.

THERMOSTOP INC

3 7 7 5 L o s c h B l v d

S t - H u b e r t , Q u e b e c

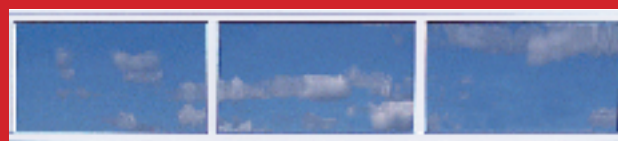
C a n a d a , J 3 Y 5 T 7

T e l : (4 5 0) 6 7 8 - 8 6 6 6

F a x : (4 5 0) 6 7 8 - 7 7 6 5

E m a i l : i n f o @ t h e r m o s t o p . c o m

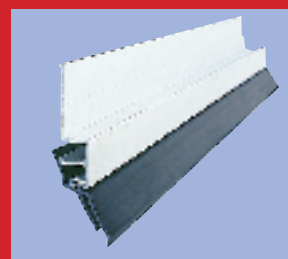
W e b s i t e : w w w . t h e r m o s t o p . c o m



Full view (type A) glazed section



Type E windows
24"x12" (610mm x 305mm)



Perimeter
weatherstrip



U-shape
bottom weatherstrip
with aluminum retainer



Inside view of door

WARRANTY

Ten years conditional warranty on the finish of the pre-painted galvanized steel or aluminum skins. Five years against delamination. One year on materials and workmanship. Please refer to our Warranty Certificate.

Specifications : Section 08362

Design criteria

- .1 Design doors to withstand windload of 1kPa with a maximum horizontal deflection of 1/120 of opening width.
- .2 Design door assembly with thermal insulation factor of R=14.30 (MARK I) [or R=18.20 (MARK II) or R=27.90 (MARK III) or R=37.20 (MARK IV)]

Materials

- .1 **Galvanized steel sheet:** commercial quality to meet ASTM A653-94, with Z180 zinc coating.
[or .1 **Aluminum sheeting:** commercial quality 5005 H14 aluminum.]
- .2 **Insulation:** polyurethane injected at high pressure, density of 41,0 kg/cubic meter, to meet CGSB 51-GP-21M.

Doors

- .1 **Reference product:** THERMOSTOP MARK I [or MARK II or MARK III or MARK IV] doors, as manufactured by THERMOSTOP INC. 3775 Losch blvd, Saint-Hubert, Quebec, J3Y 5T7, Phone: (450) 678-8666, Fax: (450) 678-7765, Web site: www.thermostop.com

- .2 **Door joint and skins:** high quality galvanized steel [or aluminum] sheeting roll formed into an exclusive "TONGUE AND GROOVE" joint, providing a TRUE THERMAL BREAK. Exterior sheeting and interior sheeting shall be:

<u>Option A: Steel</u>	or	<u>Option B: Aluminum</u>
0.41mm (26GA) stucco pre-painted		0.60mm (23 GA) stucco pre-painted
or [0.86mm (20GA) pre-painted]	or	[1.02mm (18GA) mill finish]
or [1.42mm (16GA) satin coat finish]	or	[1.30mm (16GA) mill finish]

- .3 **Manufacturing process:** The inner core shall consist of rigid polyurethane insulation foamed in place at high pressure between two skins.
- .4 **Door thickness and R-value:** the doors shall be 41 mm (1 5/8") thick (R=14.30) [or 50mm (2") thick (R=18.20) or 75mm (3") thick (R=27.90) or 100mm (4") thick R=37.20].
- .5 **Thermal break:** true THERMAL BREAK of 9mm (3/8") for MARK I [or 18mm (3/4") for MARK II or 43mm (1 3/4") for MARK III or 68mm (2 3/4") for MARK IV] will separate the exterior skin from the interior one.

- .6 **Joint seal:** between each two sections shall be a U-shaped double contact PVC weatherstrip.

- .7 **Glazing:** [2 options available]

* **type A:** available only for model MARK II. Full view glazed (3mm/3mm) section made of aluminum extrusions.

* **type E:** standard 610mm x 305mm windows. White PVC frame with a 3mm/3mm thermo sealed glass unit.

NOTE: other types of glazing are available. Please consult detailed specifications.

- .8 **End caps:** each section shall be equipped with 1.4mm (16 ga.) thick galvanized steel end caps.

- .9 **Finish:** 1) **prepainted off-white** (26 GA or 20 GA steel) 2) **prepainted brown** (26GA steel) 3) **prepainted white** (24GA aluminum) 4) **enamel factory paint (optional)** (16 GA steel or 18 GA and 16 GA aluminum) 5) **clear anodized (optional)** (18 GA and 16 GA aluminum).

NOTE: For complete and detailed standard specifications (including specifications on hardware and electric operators) call THERMOSTOP INC.

3775 Losch blvd, Saint-Hubert, Quebec, J3Y 5T7, Phone: (450) 678-8666, Fax: (450) 678-7765 or consult our Web site: www.thermostop.com